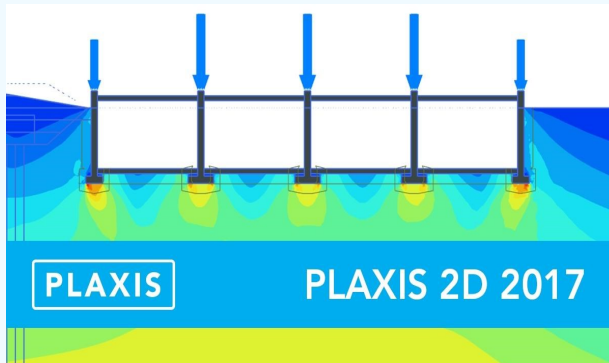


COURSE CONTENTS

- Finite Elements in Geotechnical Engineering: An Overview
- Case Studies in Geomechanics
- Dynamic Finite Element Analysis: Theory and Applications
- Introduction to Numerical Integration
- Use of PLAXIS 2D for Geotechnical Analysis such as
 - ◇ Settlement analysis
 - ◇ Excavation in Submerged condition
 - ◇ Dry Excavation using Tie Back wall
 - ◇ Analysis for Embankment
 - ◇ Free vibration & earth quake analysis of structures



COURSE OBJECTIVES

The aim of the course is to abreast the participants with,

- skill to use PLAXIS 2D for Geotechnical Analysis.
- Appreciate importance of FEA based advanced Geotechnical analysis tools

RESOURCE PERSONS

- Prof. D M Dewaikar (IIT Bombay)
- Prof. G. R. Dodagoudar,(IIT Madras)
- Dr. S. A. Halkude (Principal, WIT, Solapur)
- Mr. Sivasubramanian (General Manager), Ram Caddsys Pvt. Ltd

PARTICIPANTS

The course is designed for

- Civil Engineers, in particular Structural and Foundation Engineers engaged in design and execution of structures.
- Faculty in Structural and Geotechnical Engineering in Academic and Research institutions.
- PG students of Geotechnical and Structural stream.



20th to 24th Feb 2018

One Week STTP on,

“FINITE ELEMENT ANALYSIS IN GEOTECHNICAL ENGINEERING USING PLAXIS 2D”

Under TEQIP III



**Department of Civil Engineering,
Walchand College of Engineering,
Sangli**

(An Autonomous Institute)

Vishrambag, SANGLI-416415 Maharashtra , India

ORGANISING COMMITTEE

Advisory Committee

Dr. G. V. Parishwad (*Director*)
Dr. V. B. Dharmadhikari (*TEQIP coordinator*)
Prof. P. G. Sonavane (*HOD, Civil Engg.*)
Prof. S. N. Tande (*HOD, App. Mechanics*)
Prof. G. R. Munavalli (*Dean, Academics*)
Prof. K.S. Gumaste (*Dean QA*)

Coordinators

Dr. V. D. Salkar (**9922803990**)
Mr. A. K. Kokane (**9822964111**)

REGISTRATION FEE

includes course material, breakfast, lunch, and tea breaks. The fee is payable in advance by a crossed cheque, demand draft in favor of **Director, Walchand College of Engineering, Sangli**, payable at Sangli

Non TEQIP Institute Faculty	Rs. 3000/-
TEQIP institutes	Rs. 7000/-
Industry Professionals	Rs. 7000/-
Outside Students	Rs. 1000/-

ACCOMMODATION

Participants will have to make their own arrangements for travel and stay at Sangli. However, assistance may be provided for accommodation booking, if required. Participants may book the hotels directly. Details of hotels in 3km vicinity are as follows -

- ⇒ *Hotel Ambassador (0233-2672333)*
- ⇒ *Hotel Icon Inn(0233-675222)*
- ⇒ *Hotel Pai Prakash (0233-2300222)*
- ⇒ *Hotel Sai Prarthana (0233-2301787)*
- ⇒ *Hotel Pearl (0233-2600451)*
- ⇒ *Hotel Great Maratha (0233-2326664)*
- ⇒ *Hotel Grand Heritage (0233- 2304492)*

ABOUT INSTITUTE

Established in the year 1947, Walchand College of Engineering (WCE) is one of the reputed colleges in India. Affiliated to Shivaji University, Kolhapur, this college was granted autonomy in the year 2007 and has been one of the few selected colleges in India undergoing the MHRD funded projects under TEQIP. The college has been accredited by NAAC with "A" grade and most of the academic programmes are accredited by NBA.

The Department of Civil Engineering was the first inchoative discipline and the oldest in Southern Maharashtra region. The Department offers Bachelor's Degree in Civil Engineering (B.Tech.) and two programmes leading to Master's degree (M.Tech.) in Civil engineering with specializations of Environmental Engineering and Structural Engineering. The department has been accredited for five years by NBA consistently twice since 2003. The Department is known for its reputed teachers having expertise in diverse fields. It has built up a wide research potential in Environmental, Structural, Geotechnical Engineering and Building Technologies.

APPLICATION FORM

One Week STTP on, "Finite element analysis in Geotechnical engineering using PLAXIS 2D" during 20th to 24th Feb 2018

Name : (In capitals)

.....

Age: yrs. Gender.....

Qualification:

Designation:

Participant Type : (please tick)

Non TEQIP Institute Faculty

TEQIP institutes

Industry Professionals

Outside Students

In-house Faculty

In-house Student

Name of institute/organization:

.....

Address for correspondence:

.....

.....

Mobile No

E-mail:

DD No.....

Amount

Dated.....

Signature

Please send this form along with DD/Chq to,

A. K. Kokane,

Civil Engg. Dept., Walchand College of Engineering, Sangli(Maharashtra), 416415

Email id: anant.kokane@walchandsangli.ac.in

anantkokane@gmail.com